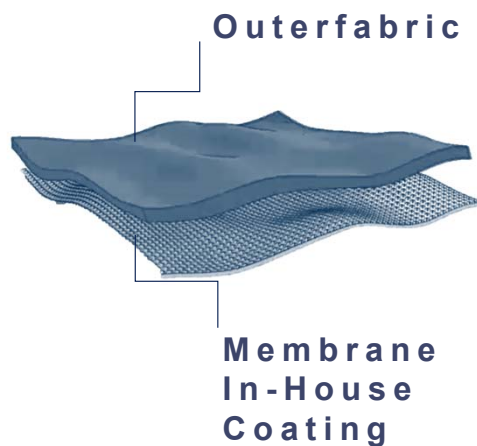
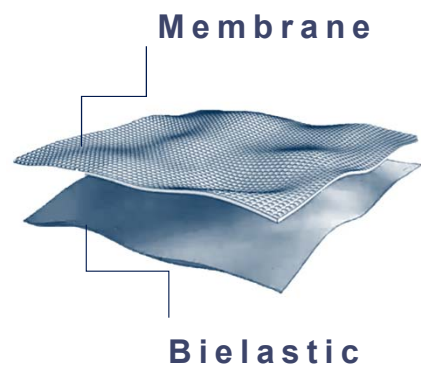




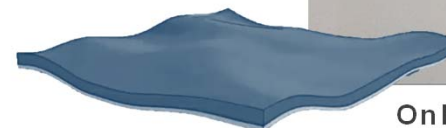
Freudenberg Performance Materials Apparel Italy

presents

PERFORMANCE & FABRICS INTERLININGS



PERFORMANCE INTERLINING



Only 53 g/m² weight



PERFORMANCE INTERLINING

allows you to create garments with an excellent textile hand feel together with distinctive functionality, such as

- wind stopper,
- water repellent,
- breathability.

We also apply the membrane on canvas, waddings etc

WHAT MAKES FREUDENBERG PERFORMANCE INTERLINING UNIQUE:

- Excellent textile handfeel thanks to the bielastic
- Exclusive PES membrane extremely light
- Outstanding technical performances
- Doesn't yellow with light or washing
- Two adhesive CP dots alternatives make it suitable for any kind of fabric





PERFORMANCE INTERLINING

Composition: 100% PL
Weight: 53 g/m²
Width: 140 cm
Water column: > 2000 (coated membrane)



When applied to fabrics, water columns range can increase up to 10000 mm

In-House Process at FPMA Sant'Omero factory



PERFORMANCE PRINTED INTERLINING



Thanks to our **in-house printing technology** we combine the technical advantages of our performance interlinings with an unlimited style factor that can completely change a collection into individual clothing fashion trends and enhance the outer fabrics' performances with an **eco rain barrier treatment**.





LAMINATION

In-House Process at FPMA Sant'Omero factory

Additionally to the membrane adhesive version which adds technical functions to the outer fabrics, we offer following solutions:

- Lamination with customer's outer fabric
- Lamination with customer's outer fabrics and Eco Rain Barrier Treatment
- Lamination with customer's outer fabrics and Customized decoration (*sublimation printing*)



FABRICS INTERLINING

TEXTILE LAMINATION

We would like to introduce a new category of interlinings designed and produced in Italy..

The concept aims to create interlinings used alongside some unusual woven materials that are able to strongly “characterize” the final look of the garment.

The base itself is made **with**

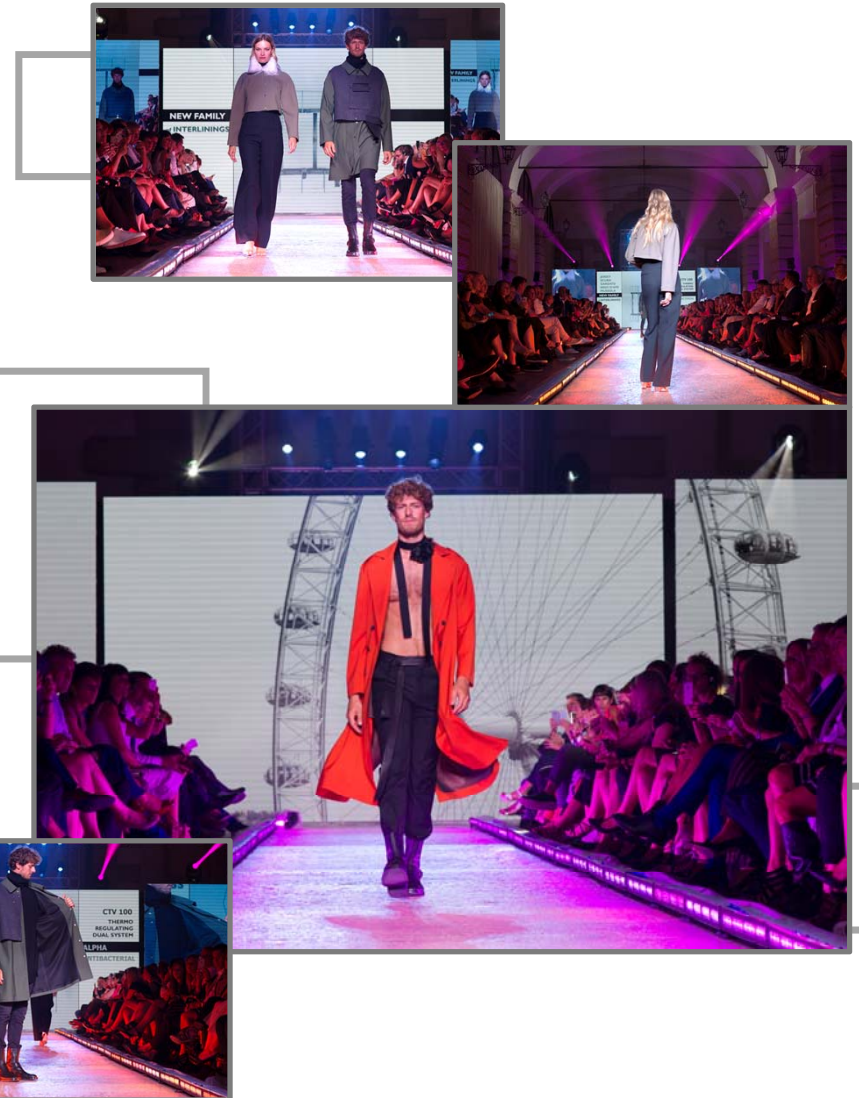
DENIM

LUMIX

ANTIBACTERIAL JERSEY

COOL

This new generation of interlinings can also be customize with our in-house printing process.





For more information contact us!

<https://apparel.freudenberg-pm.com/en/>



**FREUDENBERG PERFORMANCE MATERIALS APPAREL
MILANO**

+39 02 2886400

loredana.bonalumi@freudenberg-pm.com

DENIM

Composition:	100% CO
Weight:	135 g/m ²
Width:	140 cm

In-House Process at FPMA Sant'Omero factory





LUMIX

Composition: 63% CV, 17% PL, 15% PA, 5% EA

Weight: 105 g/m²

Width: 145 cm

Colours: three colours

In-House Process at FPMA Sant'Omero factory

ANTIBACTERIAL JERSEY

Composition:	100% CV
Weight:	135 g/m²
Width:	145 cm

In-House Process at FPMA Sant'Omero factory

COOL I7 mesh

Composition: 72% PL, 23% CV, 5% EA

Weight: 210 g/m²

Width: 145 cm

In-House Process at FPMA Sant'Omero factory

